



Meader Supply Corp.

23 Meaderboro Road, Rochester, NH 03867

1-800-4-HORSES meader@meadersupply.com Fax: (603) 332-2775 www.meadersupply.com

Dear Customer,

Thank you for your interest in our high quality line of harnesses. We offer a wide variety of styles in several different materials and sizes. We hope that the information in this packet will be helpful to you in deciding on the harness that will fit your needs. If you have any questions, our knowledgeable staff would be happy to help you. When viewing this packet please keep in mind that the terminology varies from region to region; please call if you have any questions. This is only an overview of the products we carry; please see the catalog for detailed descriptions, pictures, and prices. Harnesses can be found on pages 28 through 33 of our 2009 Tack Catalog.

Harness Sizing

We carry two standard sizes of harness; horse and draft. The horse size harnesses are made to fit horses weighing 900 to 1200 pounds. Draft size is designed to fit horses weighing at least 1500 pounds. If your horse falls in between these two categories, we suggest filling out the sizing charts enclosed in this packet. We would also suggest using a sizing chart when purchasing harnesses for such breeds as haflingers, fjords, or draft crosses, even if they fall in the above weight guidelines; as the ratio of head, girth, body length, and weight varies greatly between breeds. The harness maker can make the harness specific to each horse using the measurements you provide. On orders such as this, we require payment in advance, and all sales are final, as the harness is made specifically for a particular horse. It is very important that the harness fits properly to be sure the horse is comfortable and so that it will be safe and productive.

Harness Materials

Every harness we carry is available in leather, bioplastic, or nylon. Leather is the most traditional harness material and is the favorite in the showring. If well taken care of, it is very strong and will last many years. It is heavier than the synthetic materials and requires more maintenance to keep it in good condition. The strength of leather is unpredictable as quality, age and care all play a role.

Nylon is the lightest and least expensive of the harness materials. It is highly flexible and very strong. Nylon is prone to mold and mildew due to moisture and sweat. It can also cause chaffing. Parts of nylon harnesses, such as the back pad and spider usually have a layer of biothane under them for added comfort. Nylon harnesses are available with colored overlays.

Bioplastic (or biothane) is nylon webbing coated in polyurethane. The nylon adds strength to the harness. This can be shiny or dull. Bioplastic is lightweight, inexpensive and easy to

maintain. It only requires mild soap and water to clean. The harnesses we carry are made with either chrome or brass hardware. Harnesses can be made with stainless steel on request; the price will be adjusted accordingly.

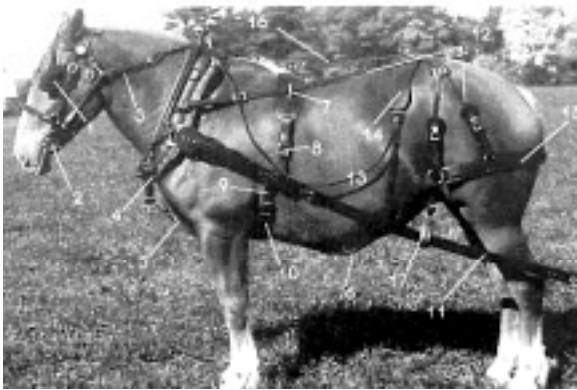
Harness Styles

Our selection of harnesses includes the Belly-Backer style harness, the New England D-Ring harness, and the breast plate style and hame style cart harness. Both the belly-backer and the D-ring style harnesses are designed for the working horse. The cart harness would be used for pleasure driving (on a very light cart) or training. The differences in these harnesses can be seen in the attached diagrams.

The cart (breast collar style or hame style) harnesses that we carry come complete with a bit, lines, slotted traces, shaft loops and hold back straps. Harness pads are sold separately.

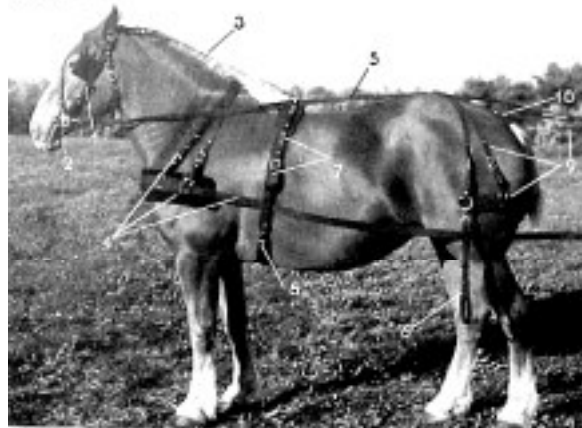
The belly-backer and D-ring (collar and hame style harnesses) come complete with bridle, bit, lines, and work hames. These can be purchased by the single harness, or team. To use a single harness on a cart, shaft loops and hold backs can easily be added. Collars are sold separately.

Belly Backer



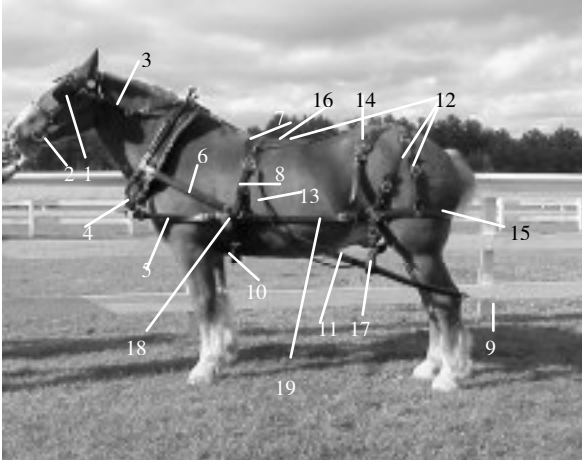
1. Bridle
2. Bit
3. Bridle Side Check Rein
4. Breast Strap
5. Choke Strap
6. Quarter Strap
7. Back Pad
8. Market Strap
9. Billet
10. Belly Band
11. Trace
12. Back and Hip
13. Tie Strap
14. Hip Drop
15. Britchen Body
16. Rear Check Strap
17. Lazy Strap / Tug Holder

Breast Plate Style



1. Bridle
2. Bit
3. Bridle Overcheck Rein
4. Breast Collar, Neck Straps & Traces
5. Single Lines
6. Hold Back
7. Back Pad with Shaft Loops
8. Belly Band
9. Britchen Body & Hip Straps
10. Crupper

New England D-Ring

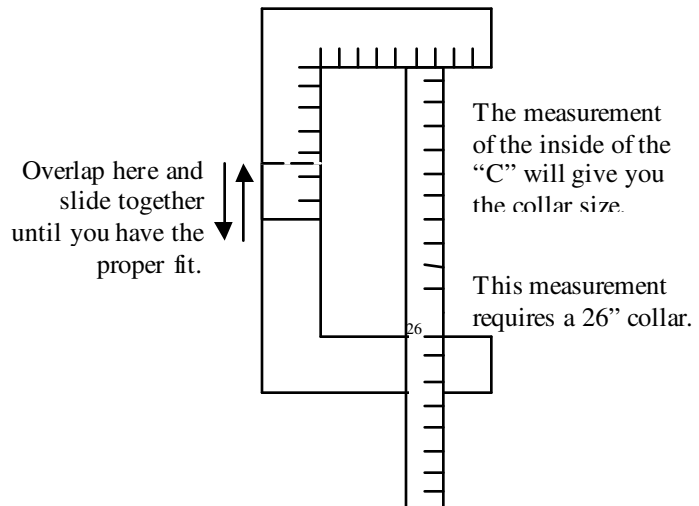
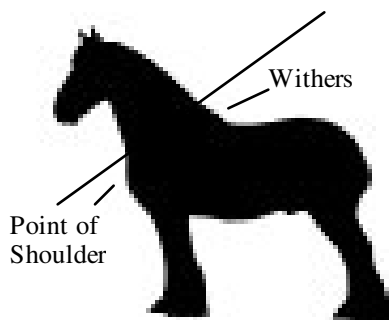


- | | |
|---------------------------|---------------------------|
| 1. Bridle | 11. Trace |
| 2. Bit | 12. Back & Hip Straps |
| 3. Bridle Side Check Rein | 13. Tie Strap |
| 4. Lazy Strap | 14. Hip Drop |
| 5. Forward Side Strap | 15. Britchen Body |
| 6. Short Trace | 16. Rear Check Strap |
| 7. Back Pad | 17. Lazy Strap/Tug Holder |
| 8. Market Strap | 18. D-Ring |
| 9. Heel Chain | 19. Rear Side Strap |
| 10. Belly Band | |

Collars

(Catalog pages 37 and 38.)

Collar sizing is very important. We recommend you purchase one of our horse neck measures to obtain the correct size collar needed. However, you can also determine the size needed by using two carpenter squares. Place them together to form a "C". Place the top of the "C" two inches in front of the shoulders. Be sure to allow finger room at the base of the throat. Measure the inside of the "C" to obtain the size. The size of the collar is measured in inches from the inside top collar cap to the inside bottom of the rim. A properly fitted collar conforms well to each side of the horse's neck, leaving just enough space at the bottom for four fingers to slide freely between the collar and the neck.



For the hame style cart harnesses that we carry, we sell full face buggy collars available in 20" and 23" for thinner necked horses, as well as half sweeney, all leather buggy collars available in sizes 17" through 22".

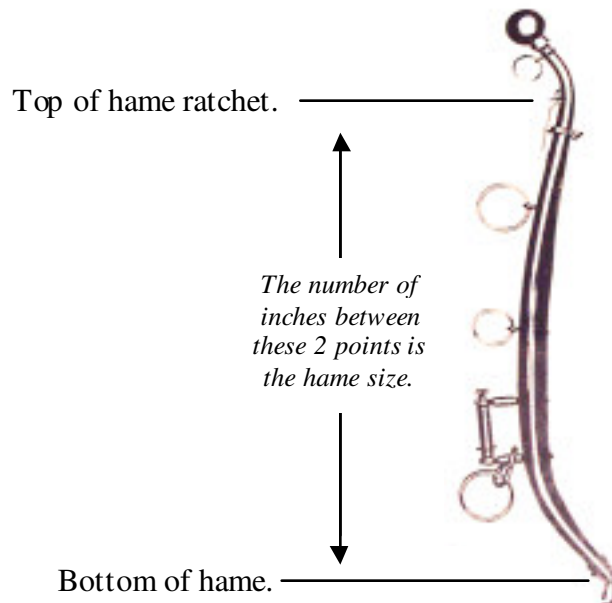
For the work harnesses we carry half sweeney collars. These are available in all leather, split leather, and tick face. The all leather collars have top quality, smooth leather on both sides of the collar, and are available in sizes 20" through 29". Split leather collars, offered in sizes 19" through 30", are smooth on the horse side and rough on the outside. The split leather collars are available in the traditional collar, as well as adjustable collars, which adjust three sizes. Adjustable collar sizes range from 16"-18" through 30"-32". These are great for growing horses, or if you only have one collar for several horses, however they are not recommended for daily use. Tick face collars have blue and white ticking on the side of the collar that lies against the horse. These are offered in sizes 21" through 30". The tick face collars are not recommended for heavy use, as they could tear. Pulling collars are available in sizes 23" through 32". These are made for horses hauling very heavy loads. With the exception of the tan pulling collars, all of the collars are black.

Collar pads are sold separately on catalog pages 51 through 54.

Hames

(Catalog page 35.)

Hames should be two sizes larger than the collar. Hames are measured from the top of the ratchet to the base of the hame. Black, steel work hames come standard with the belly-backer and D-ring harnesses. Stainless steel work hames are available as an upgrade. For the pulling horses, we do have heavy duty black steel pulling hames. Stainless steel show hames, and new and old style wooden hames are also available.



Lines
(Catalog page 34.)

7/8" leather driving lines come with the leather harnesses. 3/4" beta lines come with each nylon or biothane harness. Beta is a synthetic material that looks and feels like leather, but it remains very pliable with less maintenance. Leather and beta lines can be swapped if one is preferred over the other.

The prices of the harnesses in the catalog are based on the standard set-up. Any adjustments to the harness can be made, and the price will be adjusted accordingly.

We hope that this information has been helpful to you in deciding which type of harness is right for your needs. If you have any further questions, or would like to order a harness, please contact our knowledgeable staff. Customer satisfaction is our first priority and we will strive to make sure that our customers are satisfied with our service and the quality of the products we sell.

Thank you, and we look forward to working with you.

Meador Supply Corp.